

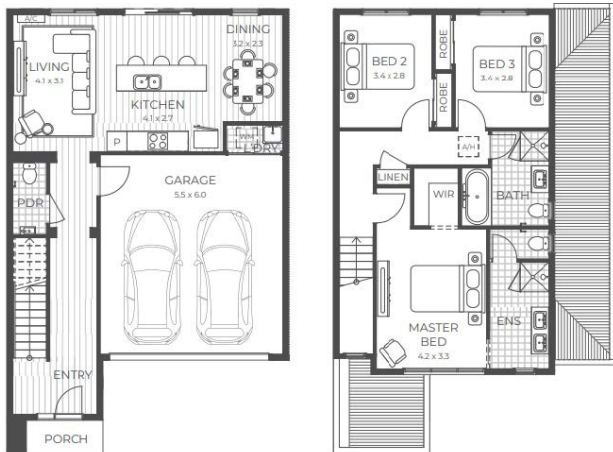


**\$20k
DEPOSIT**

The Sanctum Living Residences





A collection of 7-Star, Zero Carbon, All-Electric, Turnkey Family-Sized Residences.

Residence Type 1



Dimensions, photographs, floorplans & facades are for illustrative purposes only. Prices are based on specified floorplan and facade. See your consultant for full details of standard inclusions and plans. Prices are correct at the time of printing & subject to change without notice.

HOUSE SIZE	167.73m ²	LAND SIZE	187m ²
------------	----------------------	-----------	-------------------

			
3	2.5	1	2

- Double glazed windows
- 20mm Stone Benchtops to kitchen & bathroom
- Solar PV system
- Led downlights
- Split system to Main living & master bedroom



FIXED SITE WORKS



7 YEAR STRUCTURAL GUARANTEE



7 STAR ENERGY RATING



FRONT & REAR LANDSCAPING



ALL-ELECTRIC APPLIANCES



DRIVEWAY & FENCING

BROUGHT TO YOU BY

Why Invest at Harli?

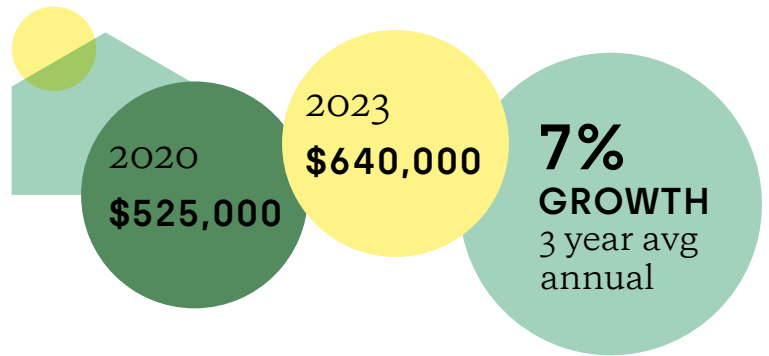
Sanctum Living Rental Appraisal

SOURCE: Core Projects



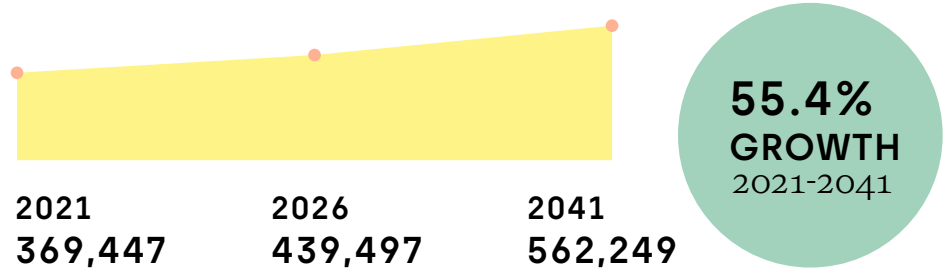
Cranbourne West Median House Price

SOURCE: Pricefinder Q4 2024



City of Casey Population Growth

SOURCE: Forecast ID 2024



Contact or visit us today to find out more about your next investment at Harli:

Andrew Bratina
0491 799 496

abratina@coreprojects.com.au



Scan me to find out more

harli.com.au

Visit the Harli Discovery Centre today, access from Lindwall Drive, Cranbourne West

Phone 1300 950 180

hello@harli.com.au