



# Harli

C.WEST 3977

The Lindwall  
Release

Community  
heart

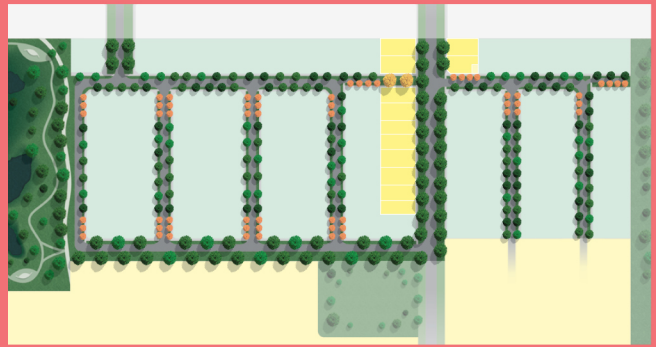
Established  
lifestyle



## THE LINDWALL RELEASE

Choose from a premium collection of east-facing lots, centrally located near Barton Primary School and Clarinda Village, offering an enviable location for your new home.

12 LOTS | LAND SIZES FROM 400M<sup>2</sup> – 512M<sup>2</sup>



**RESOLUTION<sup>P</sup><sub>G</sub>**

**CORE**

[harli.com.au](https://harli.com.au)

**DISCLAIMER:** Information contained herein is subject to change without notice. No responsibility is accepted by Resolution Property Group Pty Ltd (and its related bodies corporate) or Core Projects (VIC) Pty Ltd for any action taken in reliance thereon. Prospective purchasers should make their own enquiries to satisfy themselves on all aspects. Details herein do not constitute any representation by Resolution Property Group Pty Ltd or Core Projects (VIC) Pty Ltd and are expressly excluded from any contract. Images are artist's impression for illustrative purposes only. This plan is indicative only and specific uses, road alignment and boundaries shown may vary due to detail design consideration and approval by the relevant authorities.

The printing of this flyer has been carbon offset, please remember to recycle.